

BADLANDS MX M2 (MEDIUM) ALL TERRAIN 1:8 BUGGY TIRES



#9067-01 AVAILABLE:
FOR 1:8 BUGGY FRONT OR REAR

Features:

- Awesome Motocross-Inspired Appearance
- Bigger, Bolder and Badder than Ever
- Incredible Traction on Loose, Loamy or Muddy Terrain
- Improved Wear Resistance combined with Modern Style
- Made from Pro-Line's legendary M2 Race Rubber
- Made in the USA

MSRP: **\$31.95**

PRIME 2.8" STREET TIRES MOUNTED



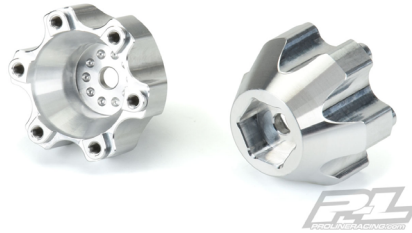
#10116-10 AVAILABLE:
FOR STAMPEDE®/RUSTLER® 2WD & 4WD FRONT AND REAR, MOUNTED ON RAID BLACK 6X30 REMOVABLE HEX WHEELS

Features:

- Maximum Street Performance
- Designed for High-Speed Runs
- Easily Replace Damaged Hexes or Upgrade to 17mm hexes
- The 2 Most Common 12mm Offsets are Included
- Fits any of Pro-Line's 6x30 Removable Wheel Hexes
- Made in the USA

MSRP: **\$45.95**

6X30 TO 14MM ALUMINUM HEX ADAPTERS



#6346-00 AVAILABLE:
FOR PRO-LINE 6X30 2.8" WHEELS

Features:

- Aluminum 6x30 to 14mm Hex Adapters
- Built to Take a Beating
- Clear Anodized Aluminum Looks Incredibly Impressive
- Fits any of Pro-Line's 6x30 Removable Hex Wheels
- For ARRMA Granite 3S 4x4 & Senton 3S 4x4
- Made in the USA

MSRP: **\$47.95**

BADLANDS 2.8" ALL TERRAIN TIRES MOUNTED



#1173-10 AVAILABLE:
FOR STAMPEDE®/RUSTLER® 2WD & 4WD FRONT AND REAR, MOUNTED ON RAID BLACK 6X30 REMOVABLE HEX WHEELS

Features:

- Tire Design Based on Motocross Tread Technology
- Large Tire Lugs for the Ultimate in Tire Durability
- Easily Replace Damaged Hexes or Upgrade to 17mm hexes
- The 2 Most Common 12mm Offsets are Included
- Fits any of Pro-Line's 6x30 Removable Wheel Hexes
- Made in the USA

MSRP: **\$45.95**

POMONA DRAG SPEC 2.2" BLACK FRONT WHEELS



#2775-03 AVAILABLE:
FOR SLASH® 2WD (USING 2.2" 2WD BUGGY FRONT TIRES)

Features:

- 2.2" Front Wheel Design Ideal for No-Prep SC Drag Racing
- Perfect Size for Pro-Line's Hoosier Drag 2.2" Front Tires
- Scale Spoke Detail, Just Like at the Pomona Drag Strips
- Strong and Lightweight for Maximum Performance
- 12mm hex Wheel for Use with Slash® 2wd
- Made in the USA

MSRP: **\$12.95**

SAND PAW 2.8" SAND TIRES MOUNTED



#1186-10 AVAILABLE:
FOR STAMPEDE®/RUSTLER® 2WD & 4WD FRONT AND REAR, MOUNTED ON RAID BLACK 6X30 REMOVABLE HEX WHEELS

Features:

- Huge Paddles Perfect for your Truck
- Grip and Rip Through the Sand and Snow
- Easily Replace Damaged Hexes or Upgrade to 17mm hexes
- The 2 Most Common 12mm Offsets are Included
- Fits any of Pro-Line's 6x30 Removable Wheel Hexes
- Made in the USA

MSRP: **\$45.95**

POMONA DRAG SPEC 2.2"/3.0" BLACK WHEELS



#2776-03 AVAILABLE:
FOR SLASH® 2WD REAR & SLASH 4X4 FRONT OR REAR

Features:

- SC 2.2"/3.0" Rear Wheel Design Ideal for No-Prep SC Drag Racing
- Perfect Size for Pro-Line's Hoosier Drag Slick SC Tires
- Scale Spoke Detail, Just Like at the Pomona Drag Strips
- Strong and Lightweight for Maximum Performance
- 12mm Hex Wheel for Use with Slash® 2wd
- Made in the USA

MSRP: **\$14.95**

MASHER 2.8" ALL TERRAIN TIRES MOUNTED



#1192-10 AVAILABLE:
FOR STAMPEDE®/RUSTLER® 2WD & 4WD FRONT AND REAR, MOUNTED ON RAID BLACK 6X30 REMOVABLE HEX WHEELS

Features:

- Ultra-Traction Chevron type Tread
- Designed to Tackle any Terrain
- Easily Replace Damaged Hexes or Upgrade to 17mm hexes
- The 2 Most Common 12mm Offsets are Included
- Fits any of Pro-Line's 6x30 Removable Wheel Hexes
- Made in the USA

MSRP: **\$45.95**

LATE MODEL INTERIOR (CLEAR)



#3527-00 AVAILABLE:
FOR MOST 1:10 CRAWLER BODIES (WITH TRIMMING)

Features:

- Modern Bucket-Style Seat and Interior
- Perfect fit for Pro-Line's 2017 Ford® Raptor Crawler Bodies (3509-00 & 3516-00)
- Custom Paint to Match Your Rig
- Detailed Stickers Included
- Made in the USA

MSRP: **\$39.95**

PROTOFORM EUROPA M CLEAR BODY



#1567-25 AVAILABLE:
FOR M-CHASSIS (210 OR 225 MM)

Features:

- Hot hatch styling
- Fits 210mm or 225mm wheelbases
- Super scale looks
- Add-on wing struts and polycarbonate wing
- Low CG
- Made in the USA

MSRP: **\$34.95**

