

### HOOSIER DRAG SLICK SC 2.2"/3.0" DRAG RACING TIRES



**#10157-17** MC (CLAY) AVAILABLE:  
**#10157-203** S3 (SOFT)

FOR SC TRUCKS REAR

#### Features:

- Officially Licensed Hoosier Drag Slick Tire Design
- White Hoosier Logos Proudly Displayed on Sidewall
- Exact Scale Detail
- Specifically Made for No-prep Drag Racing
- Combine with the Hoosier 2.2" Drag Front Tires to Complete the Look
- Soft, Re-usable and Water-proof Closed Cell Foam Inserts Included
- Made in the USA

MSRP: **\$34.95**

### HOOSIER DRAG 2.2" 2WD DRAG RACING FRONT TIRES



**#10158-17** MC (CLAY) AVAILABLE:  
**#10158-203** S3 (SOFT)

FOR 2.2" 1:10 2WD FRONT BUGGY WHEELS

#### Features:

- Officially Licensed Hoosier Drag Slick Tire Design
- White Hoosier Logos Proudly Displayed on Sidewall
- Exact Scale Detail
- Specifically Made for No-prep Drag Racing
- Combine with the Hoosier Drag Slick Rear Tires to Complete the Look
- Soft, Re-usable and Water-proof Closed Cell Foam Inserts Included
- Made in the USA

MSRP: **\$26.95**

### BRUTE CLEAR BODY



**#3526-00** AVAILABLE:  
FOR ARRMA OUTCAST & NOTORIOUS

#### Features:

- Paintable Clear body for ARRMA Outcast & Notorious!
- Brute Styling is Tough and Modern
- Fits Unique Shape of Outcast & Notorious Chassis
- Detailed Graphics and Window Stickers Included
- Made with Crystal Clear Polycarbonate
- Made in the USA

MSRP: **\$47.95**

### PRE-CUT BRUTE BASH ARMOR (WHITE) BODY



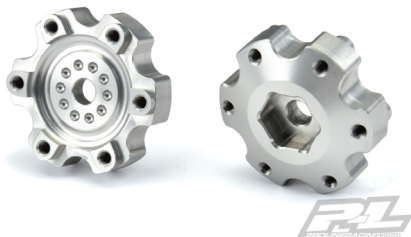
**#3526-15** AVAILABLE:  
FOR ARRMA OUTCAST & NOTORIOUS

#### Features:

- All-new Bash Armor Ultra-Durable Material!
- Body Styling is Twice as Thick as Normal Bodies
- Brute Styling is Tough and Modern
- Fits Unique Shape of ARRMA Outcast & Notorious Chassis
- Bash Armor Material Flexes Instead of Shattering
- Battle your Buddies with Confidence
- Detailed Graphics and Window Stickers Included
- Pre-Cut to Save You Time!
- Made in the USA

MSRP: **\$99.95**

### 6X30 TO 12MM ALUMINUM HEX ADAPTERS



**#6337-00** NARROW AVAILABLE:  
**#6337-01** WIDE

FOR PRO-LINE 6X30 2.8" WHEELS

#### Features:

- Aluminum 6x30 to 12mm Hex Adapters
- Built to Take a Beating
- Clear Anodized Aluminum Looks Incredibly Impressive
- Fits any of Pro-Line's 6X30 Removable Hex Wheels
- Available in both Narrow and Wide versions
- Made in the USA

MSRP: **\$47.95**

### PRISM 2.0 2.2" OFF-ROAD CARPET BUGGY REAR TIRES



**#8277-103** Z3 (MEDIUM CARPET) AVAILABLE:  
**#8277-104** Z4 (SOFT CARPET)

FOR 2.2" 1:10 REAR BUGGY WHEELS

#### Features:

- Even More Ultra-Sharp Prism Shaped Pins that Stick to the Carpet
- Low Profile Tire Shape = Faster Lap Times
- Long Lasting & Super Consistent Performance
- Directional Side Tread - Choose between More or Less Aggressive
- Combine with Pro-Line's Front Carpet Tires
- Made in the USA

MSRP: **\$20.95**

### PRISM 2.2" 2WD OFF-ROAD CARPET BUGGY FRONT TIRES



**#8278-103** Z3 (MEDIUM CARPET) AVAILABLE:  
**#8278-104** Z4 (SOFT CARPET)

FOR 2.2" 1:10 2WD FRONT BUGGY WHEELS

#### Features:

- Ultra-Sharp Prism Shaped Pins with Wedge on the Sides
- Massive Steering Without the Edgy Feel
- Ideal for Small and Tight Indoor Carpet tracks
- Long Lasting & Super Consistent Performance
- Combine with Pro-Line's Rear Carpet Tires
- Made in the USA

MSRP: **\$18.95**

### WEDGE LP 2.2" 4WD OFF-ROAD CARPET BUGGY FRONT TIRES



**#8279-103** Z3 (MEDIUM CARPET) AVAILABLE:  
**#8279-104** Z4 (SOFT CARPET)

FOR 2.2" 1:10 4WD FRONT BUGGY WHEELS

#### Features:

- Hook Shaped Tread Provides Consistent Steering
- Low Profile Provides Faster Corner Speed
- Overall Faster Lap Times
- More Convenience with No Pin Trimming Required
- Combine with Pro-Line's Rear Carpet Tires
- Made in the USA

MSRP: **\$18.95**

### PRO-LINE R/C BODY PAINT PHASE 3 - SOLID



AVAILABLE:

SPECIALLY FORMULATED WATER-BASED AIRBRUSH PAINT

- #6325-08** MIL SPEC GREEN
- #6325-09** MOJAVE SAND
- #6325-10** SLATE BLUE
- #6325-11** HERITAGE BLUE
- #6325-12** PRIMER GRAY

Only Available Individually

MSRP: **\$7.95**

### PRO-LINE R/C BODY PAINT PHASE 3 - PEARL



AVAILABLE:

SPECIALLY FORMULATED WATER-BASED AIRBRUSH PAINT

- #6327-04** PEARL BLACK
- #6327-05** PEARL PURPLE
- #6327-06** PEARL RED

Only Available Individually

MSRP: **\$8.95**

### PRO-LINE R/C BODY PAINT PHASE 3 - FLUORESCENT



AVAILABLE:

SPECIALLY FORMULATED WATER-BASED AIRBRUSH PAINT

- #6328-06** FLUORESCENT PINK
- #6328-07** FLUORESCENT TANGERINE
- #6328-08** FLUORESCENT AQUA

Only Available Individually

MSRP: **\$7.95**

### PRO-LINE R/C BODY PAINT PHASE 3 - MATTE CLEAR



**#6324-02** AVAILABLE:

SPECIALLY FORMULATED WATER-BASED AIRBRUSH PAINT

#### Features:

- Professional Results
- Developed by R/C Painters for R/C Painters
- Spray Without the Hassle of Mixing
- Extremely Durable and Ultra-Flexible & Easy to Use
- May be reduced 5-10% with #6324-00 Paint Reducer (Sold Separately) for smaller tips and other specific applications
- Made in the USA

MSRP: **\$11.95**

### TRENCHER LP 2.8" ALL TERRAIN TIRES MOUNTED



**#10159-10** AVAILABLE:

FOR STAMPEDE®/RUSTLER® 2WD & 4WD FRONT AND REAR,  
MOUNTED ON RAID BLACK 6X30 REMOVABLE HEX WHEELS

#### Features:

- Ridiculous Amounts of Traction and Side-to-Side Stability
- Low Profile Tire Size That is Perfect for the Rustler®
- Great for Sand, Snow, Street, Gravel and Loose or Hard Packed Dirt
- Removable Hexes Allow you to Change Wheel Offsets on the Fly
- Easily Replace Damaged Hexes or Upgrade to 17mm hexes
- The 2 Most Common Offsets are Included
- Fits any of Pro-Line's 6x30 Removable Wheel Hexes
- Made in the USA

MSRP: **\$45.95**

### SAND PAW LP 2.8" SAND TIRES MOUNTED



**#10160-10** AVAILABLE:

FOR STAMPEDE®/RUSTLER® 2WD & 4WD FRONT AND REAR,  
MOUNTED ON RAID BLACK 6X30 REMOVABLE HEX WHEELS

#### Features:

- Huge Paddles Perfect for your Rustler® 2wd or Rustler® 4x4
- Grip and Rip Through the Sand and Snow
- Awesome Split Paddle Technology for the Highest Possible Traction
- Removable Hexes Allow you to Change Wheel Offsets on the Fly
- Easily Replace Damaged Hexes or Upgrade to 17mm hexes
- The 2 Most Common Offsets are Included
- Fits any of Pro-Line's 6x30 Removable Wheel Hexes
- Made in the USA

MSRP: **\$45.95**

### STREET FIGHTER LP 2.8" STREET TIRES MOUNTED



**#10161-10** AVAILABLE:

FOR STAMPEDE®/RUSTLER® 2WD & 4WD FRONT AND REAR,  
MOUNTED ON RAID BLACK 6X30 REMOVABLE HEX WHEELS

#### Features:

- Street Tread Perfect for your Rustler® 2wd or Rustler® 4x4
- Grip and Rip on Asphalt and Concrete
- Aggressive Long Wear Street Tread
- Removable Hexes Allow you to Change Wheel Offsets on the Fly
- Easily Replace Damaged Hexes or Upgrade to 17mm hexes
- The 2 Most Common Offsets are Included
- Fits any of Pro-Line's 6x30 Removable Wheel Hexes
- Made in the USA

MSRP: **\$45.95**

### PROTOFORM SPEC6 CLEAR BODY



**#1568-20** X-LITE AVAILABLE:

**#1568-25** LIGHT WEIGHT

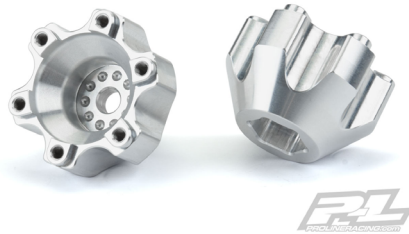
FOR 190MM TC

#### Features:

- Updated Take on a Classic
- Super smooth, High Cornerspeed Feel
- New Wing Hardware Included
- Global Body Spec Compliant
- Mounting Marks for Easy Body Positioning
- Made in the USA

MSRP: **\$34.95**





LESS AGGRESSIVE



MORE AGGRESSIVE



PRO-Form