

DECIMATOR 2.6" ALL TERRAIN TIRES



#10162-02 AVAILABLE:
FOR 2.6" CLOD BUSTER WHEELS
FRONT OR REAR

- Features:**
- Combines Scale Appearance and Performance
 - Maximum Destructive Traction
 - Made from Pro-Line's Legendary M3 Race Rubber
 - Decimate the Competition
 - Massive Forward Bite not yet seen in the Scale Monster Truck Class
 - Ideal Tire Size and Width Both Lightweight and Agile
 - Soft Foam Inserts Included for Ultra-Plush Landings
 - Made in the USA

MSRP: **\$46.95**

PRE-CUT BRUTE CLEAR BODY (E-REVO® 2.0)



#3530-17 AVAILABLE:
FOR E-REVO® 2.0

- Features:**
- Paintable Pre-Cut Body for E-REVO® 2.0!
 - Brute Styling is Tough and Modern
 - Fits Unique Shape of E-REVO® 2.0 Chassis Including Inner Cage
 - Detailed Graphics and Window Stickers Included
 - Made with Crystal Clear Polycarbonate
 - Made in the USA

MSRP: **\$61.95**

PRE-CUT BRUTE CLEAR BODY (KRATON)



#3521-17 AVAILABLE:
FOR ARRMA KRATON

- Features:**
- Paintable Pre-Cut Body for ARRMA Kraton!
 - Brute Styling is Tough and Modern
 - Fits Unique Shape of Kraton Chassis Including Inner Cage
 - Detailed Graphics and Window Stickers Included
 - Made with Crystal Clear Polycarbonate
 - Made in the USA

MSRP: **\$61.95**

ULTRA RESERVOIR SHOCK CAP REBUILD KIT

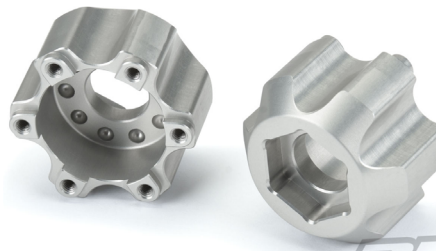


#6293-01 AVAILABLE:
FOR PRO-LINE 6293-00 SHOCK CAP

- Features:**
- Contains all the O-Rings you Need for your Ultra Reservoir Shock Cap
 - Rebuild your Reservoirs to Like-new Status
 - Same O-Rings that are Included from the Factory

MSRP: **\$15.95**

6X30 TO 17MM ALUMINUM HEX ADAPTERS



#6338-00 AVAILABLE:
FOR PRO-LINE 6X30 2.8" WHEELS

- Features:**
- Aluminum 6x30 to 17mm Hex Adapters
 - Built to Take a Beating
 - Clear Anodized Aluminum Looks Incredibly Impressive
 - Fits any of Pro-Line's 6x30 Removable Hex Wheels
 - Made in the USA

MSRP: **\$47.95**

PYRAMID 2.2" ASTRO BUGGY TIRES MOUNTED



#8267-13 Z3 (MEDIUM CARPET) AVAILABLE:
#8267-14 Z4 (SOFT CARPET)

FOR 1:10 BUGGY REAR, MOUNTED ON
VELOCITY HEX REAR WHITE WHEELS

- Features:**
- Design Specifically for Astro Turf Racing
 - Large Pyramid Shaped Pins Dig into the Surface
 - Knife Edge Pins Pointed Front to Back for Maximum Grip
 - Ultra-lightweight Design
 - Several Grams Lighter than Stock
 - Made in the USA

MSRP: **\$30.95**

PRISM 2.0 2.2" OFF-ROAD CARPET BUGGY TIRES MOUNTED



#8277-13 Z3 (MEDIUM CARPET) AVAILABLE:
#8277-14 Z4 (SOFT CARPET)

FOR 1:10 BUGGY REAR, MOUNTED ON
VELOCITY HEX REAR WHITE WHEELS

- Features:**
- Even More Ultra-Sharp Prism Shaped Pins that Stick to the Carpet
 - Low Profile Tire Shape = Faster Lap Times
 - Ultra-lightweight Design
 - Several Grams Lighter than Stock
 - Made in the USA

MSRP: **\$30.95**

BADLANDS MX ALL TERRAIN 1:8 BUGGY TIRES MOUNTED



#9067-31 WHITE WHEELS AVAILABLE:
#9067-41 BLACK WHEELS

FOR 1:8 BUGGY FRONT OR REAR
MOUNTED ON WHITE OR BLACK WHEELS

- Features:**
- Awesome Motocross-Inspired Appearance
 - Bigger, Bolder and Badder than Ever
 - Greater Stability and Connectivity
 - For use on Standard 17mm 1:8 Hexes
 - Extremely True Finish
 - Made in the USA

MSRP: **\$45.95**

HYRAX 2.2" ROCK TERRAIN TRUCK TIRES



#10132-03 AVAILABLE:

FOR 2.2" ROCK CRAWLER WHEELS FRONT OR REAR

Features:

- All-new Ground up Design for Maximum Performance
- Highly Detailed Sidewall for Scale Looks
- Stepped Blocks & Multiple Sipes Create Unmatched Grip
- Tackle tough terrain in Scale Style
- Made in the Predator (Super Soft) Material
- Made in the USA

MSRP: **\$38.95**

INTERCO® TSL SX SUPER SWAMPER® 2.8" ALL TERRAIN TIRES MOUNTED



#10110-10 AVAILABLE:

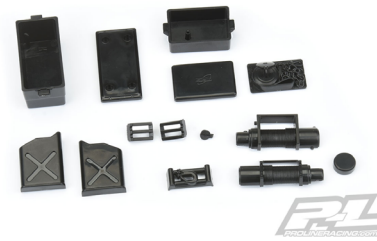
FOR STAMPEDE®/RUSTLER® 2WD & 4WD FRONT AND REAR, MOUNTED ON RAID BLACK 6X30 REMOVABLE HEX WHEELS

Features:

- Interco® TSL SX Super Swamper® Replica Design
- Optimum Handling, Durability and Longevity
- Removable Hexes Allow you to Change Wheel Offsets on the Fly
- Easily Replace Damaged Hexes or Upgrade to 17mm hexes
- The 2 Most Common 12mm Offsets are Included
- Made in the USA

MSRP: **\$46.95**

DIY SCALE ACCESSORY ASSORTMENT #1



#6040-01 AVAILABLE:

FOR 1:10 CRAWLERS AND MONSTER TRUCK - (COOLER WITH COVER, WINCH BOX WITH TOW STRAP AND COVER, GAS CAN, HD WINCH)

Features:

- Injection Molded
- Highly Detailed Replica Support Equipment
- Adds Unparalleled Realism to your Scale Rock Crawler
- Can be Painted for the Ultimate Customizable Experience
- Perfect for 1:10 Crawlers and 1:10 Monster Trucks

MSRP: **\$19.95**

DIY SCALE ACCESSORY ASSORTMENT #2



#6045-01 AVAILABLE:

FOR 1:10 CRAWLERS AND MONSTER TRUCK - (HIGH LIFT JACK, PRY BAR, SHOVEL, AXE)

Features:

- Injection Molded
- Highly Detailed Replica Support Equipment
- Adds Unparalleled Realism to your Scale Rock Crawler
- Can be Painted for the Ultimate Customizable Experience
- Perfect for 1:10 Crawlers and 1:10 Monster Trucks

MSRP: **\$13.95**

DIY SCALE ACCESSORY ASSORTMENT #8



#6105-01 AVAILABLE:

FOR 1:10 CRAWLERS AND MONSTER TRUCK - (FUEL CELL, NITRO BOTTLE, BOTTLE BRACKET, FUEL PUMP, FUEL REGULATOR, FIRE PIT GRATE)

Features:

- Injection Molded
- Highly Detailed Replica Support Equipment
- Adds Unparalleled Realism to your Scale Rock Crawler
- Can be Painted for the Ultimate Customizable Experience
- Perfect for 1:10 Crawlers and 1:10 Monster Trucks

MSRP: **\$22.95**



